

USB Skype / PSTN / Video 3 in 1 desktop speaker phone with Skype Gateway



**SE-P51SP (optional web cam)
User manual**

1 Instruction

1.1 Summary

Plug into your computer's USB port and connect to your PSTN line, you can make and receive PSTN line and Skype calls. Phone rings for all incoming calls, dial Tel numbers, Skype contacts and SkypeOut numbers from the phone. With dot-matrix LCD and keypad, it is easy to use it just as simple desktop phone.

1.2 Features

- Dot-matrix graphic LCD, backlight, support any languages
- Dial Skype contacts (speed dial number) and SkypeOut number by phone keypads
- Easy dial PSTN and mobile phone number from phone book
- Phone ring for incoming calls, ring style and volume selectable
- Caller ID function of skype and PSTN calls
- 199 incoming calls and 199 dialed numbers
- Save all call-in, call-out and missed calls information
- PC to PC, PC to Telephone, Telephone to Telephone operation
- Adapt to common Tel Line, Ext. Line and ADSL.
- Echo cancellation, noise reduction, full duplex communication
- Commercial grade high quality speakerphone, ideal for conference calls

- Capacity to Choose PSTN calls or Skype Call out by dial numbers automatically.

- Embedding IP number of PSTN, support PSTN IP Call out
- PSTN call in , Show client information automatically when receive

CID

- Ready for Video calls, Hot Key transfer Skype Video Windows
- Ready for Memory Disk phone, Build-in driver and Skype (optional webcam)
- Support Voice Mail
- Support Call forwarding , Skype to Phone or Phone to Skype on desktop

1.3 System Requirements

1. Windows 2000 or XP
2. 400MHz processor and free USB1.1 or USB2.0 port
3. 128MB RAM and 15MB free disk space
4. Any broadband connection or minimum 33.6 Kbps dialup

1.4 Interface

- 1 USB interface to PC
- 1 PSTN Line

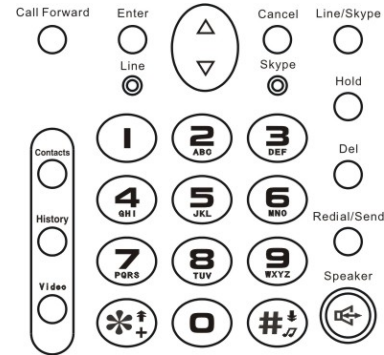
1.5 Package Contents

1. One USB Desktop Phone

2. One user manual
3. One installation CD
4. One USB Cable
5. USB camera (optional)

2 Using the Desktop Phone

2.1 Keypad



Contacts:






.

(1) Press Contacts or Enter key to display the contacts list, ▲/▼ to scroll the contacts list. choose a contacts name,

Press redial/Send key to call out the friend display on the LCD

Press Cancel key to go back to idle

Choose a contacts name, press Enter to show detail:

-  Echo/sound test system
-  echo123
-  (Moblie Phone Tel No.)
-  (Office Tel No.)
-  (Home Tel No.)

▲/▼ to scroll to choose the Call ID, Press Cancel key to go back to contact list.

History



Press to switch to “History” tab at ready state.



Video:

Start or stop my video.

Call forward:

Press to start call forwarding function:

When LCD display as follow:  → , that's startup the function of Skype call forwarding to Phone

When LCD display as follow:  ↔ , that's startup the function of Skype call forwarding to Phone, and Phone call forwarding to Skype

Line/Skype:

. Press to choose call out by Skype or PSTN line, or make or receive a other line call out or call in

Del:

- (1) Press to clear any numbers you have entered for a call.
- .(2) Press to switch between the Tabs of the Skype software.
- .(3) During a call you can press “Del” to enable mute, press “Del” again to disable mute

▲/▼ Up/down:

Press ▲/ ▼ to scroll call/contact list and to adjust volume when talking

HOLD:


Press to hold the current call, press again to reactivate the call.

Speaker:

Hand free key

*+:

Press to input “+” at the ready state, else input “*+”.

 : Press to call out.

Redial/Send:

Send or redial a call ID

0-9: digital keys

(1) Press to input digital numbers.

(2) Press to send DTMF message while talking.

2.2 Run Skype

(1) Download Skype software and install it (www.skype-phone.net).

The version must be 1.0.0.106 or higher. To make video call,

version 2.0 or higher is required.

(2) Run Skype and log in with Skype account.

You can create a Skype account as shown below:



After software’s startup, the icon will appear to the system tray as shown below:



That indicates the Skype are successfully connected to Internet. If the icon is shown as




, please check your Internet connection.

2.3 Run SkypeTerm

(1) Insert SkypeTerm installation CD or download SkypeTerm software from www.skype-phone.net , then install it.

(2) Run SkypeTerm

Double-click the icon  on the desktop, the Skype program will pop up the window as shown below:





Select the first option “Allow this program to use Skype”, click “OK” button.

Note: If you selected the wrong option, you can make another selection. Please see 3. FAQ /problem3 for detail.

After running SkypeTerm, the icon will appear to the system tray as shown:

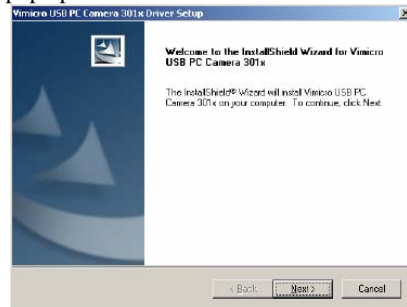


That indicates the device and Skype are connected successfully.If the icon shown as  (the phone is green and the outside is grey), please run Skype first. If the icon shown as  (the phone is red and the outside is green),it means USB Desktop phone is connected incorrectly. Please reconnect USB Desktop Phone to PC.

2.4 Install Camera Driver

(1) Insert CD to CD-ROM, click Install camera driver

(2) The program will pop up the window as shown below:



Click Next to start installing the driver

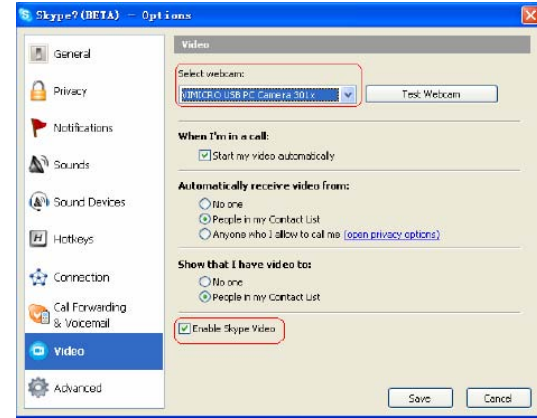


Click Finish to finish the installation.

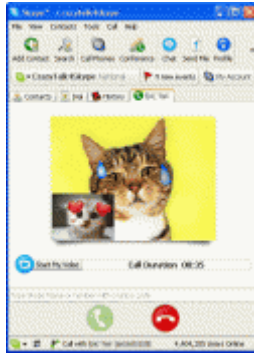


2.5 Setting

Execute "Tools->Options ->Video" on Skype interface to open the window as shown below:



- (1) Select the option "Enable Skype Video".
- (2) Set "Select webcam" to "VIMICRO USB PC Camera 301x".
- (3) Click Test Webcam to check if you can see yourself in the area shown as below:



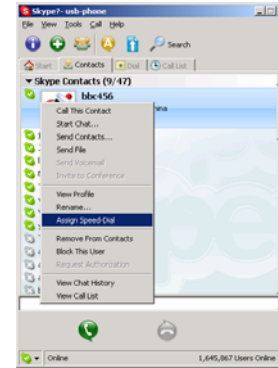
(4) Click Close to go back to previous menu.

(5) Click Save to save the setting.

Now the camera is ready. You can make video calls with your friends who has PC camera too.

2.6 Call another Skype user

- ❑ Add "bbc346" to Contacts
- ❑ Assign Speed-Dial for it, example "11"



- ❑ Input number and call out:

Press digital "11" on USB Speaker Phone, this number will be shown on Skype window, then press SEND key to call out.

2.7 Call to normal phone by skype

Press "00"+"country number" + "phone number", then press SEND key to call out.

Example: Call to China, Beijing, press 00861012345678, then press SEND key.

0086	10	12345678
-----	-----	-----
country code	city code	destination number

Note:

(1) You can input "+"(press "*+" key) instead of "00".

For example: Call to China, Beijing, press +861012345678.

- (2) If you want to use this function, you should buy SkypeOut Credit from www.skype.com first.

2.8 Answer or Cancel a call

When USB Desktop Phone is ringing for a incoming call , pick up handset or press Speaker or Enter key to answer the call.

When USB Desktop Phone is ringing for a incoming call, press Cancel key to refuse the call.

2.9 State Instruction

(1) Idle state

- a. Skype online b. Skype offline c. Missed call



(2) The icons display in call list

- a. Incoming call b. Outgoing call c. Missed call



(3) The icons display in contacts

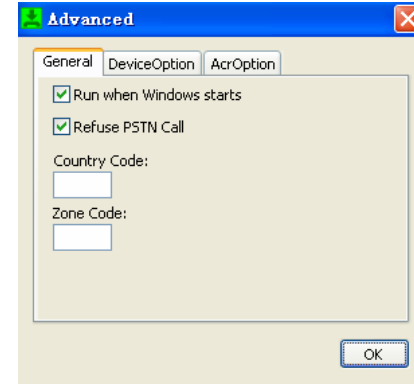
- a. Online b. Offline c. SkypeOut



3.0 Advance Setting

(1) Right click the icon on the taskbar and select **Advance**

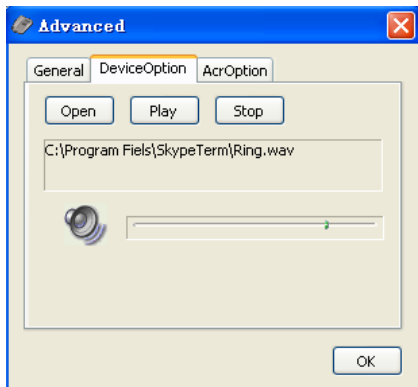
(2) The window is shown as below:



(3) Run when Windows starts: Select to enable this feature. The SkypeTerm will be launched automatically when Windows starts.

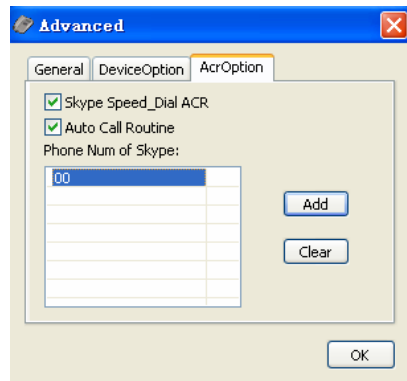
(4) Refuse PSTN Call: select to enable this feature. You can refuse a PSTN Call, when a PSTN call in Via press Cancel key.

(5) Country code and Zone code, fill in your local country code and Zone code



Choose Ring sound, support MP3 and wav format music ringing.

(6) Acr Option



Choose **Skype Speed_dial ACR** to dial Skype Speed dial without choosing Line/Skype routeway by **Line/Skype Key**

Choose **Auto call routine** to auto routine skype out,

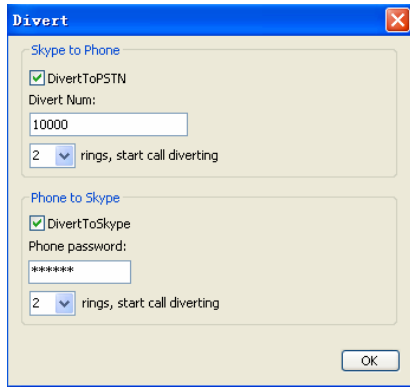
For example:

Add **00** code in routine option, when you dial **00 86 755 27837767**, the phone will choose Skype out calling.

(7) Divert

Right click the icon on the taskbar and select **Divert**

(8) The window is shown as below:



(9) Select Skype to Phone to enable the function.

You also can choose this function by Call forward key, the LCD display as follow:



, Skype call forwarding to Phone

Set the phone number you would like to divert, in the Divert number box. e.g, domestic 10000, international 008675510000

Test the function by doing following steps:

Call in from Skype, the phone rings

After 2 rings, all 2 indicators are activated and forward the call to diverted number

Press Cancel Key to cancel any Call forward speaking at USB desktop phone terminal.

(10) Select Phone to Skype to enable this function

You also can choose this function by Call forward key, the LCD display as follow:



Phone call forwarding to Skype

Set password (Optional) in the Phone password box. e.g., 123456 (minimum 1 maximum 6)

Test the function by doing following steps

Call the PSTN line which is connected to your USB Desktop phone from your mobile phone, and then the phone is ringing.

After 2 rings, all 2 indicators are activated, Enter your password followed by #(eg:123456#) to select the divert function, then you would like to skype call out as same as your Skype a call.

Press Cancel Key to cancel any Call forward speaking at USB desktop phone terminal.

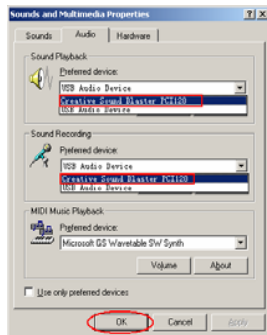
3.1 FAQ

Problem 1

There is no voice comes out when play music?

Resolution

Please execute the “Control Panel->Sound and Video (🔊) ->Audio”, set **Sound Playback** and **Sound Recording**'s preference device to your sound card. It shown as below:

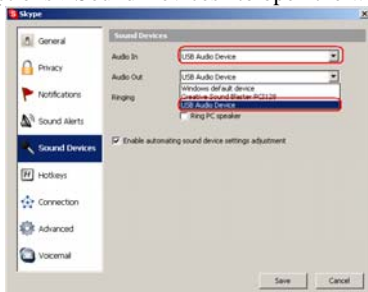


Problem 2

The voice is played from the PC's sound card instead of the USB Speaker Phone when I make/answer a call?

Resolution

Execute "Tools->Options->Sound Devices" to open the window as below:



Set "Audio In" and "Audio Out" to "USB Audio Device".

Problem 3

Skype has been started, but the icon of SkypeTerm still shown as  (the phone is green and the outside is grey)?

Resolution

Maybe you have selected the wrong option. You can execute "Tools-> Options-> Privacy-> Manage other programs' access to Skype", and then choose the needed option, click "Change" button to open the "Manage API Access Control" windows, and make another selection.

Problem 4

The picture in the camera is not clearly?

Resolution

Adjust the camera until the picture is clear.

Problem5

I can't see anything in the camera?

Resolution

- (1) If you have installed driver for other video devices, please uninstall them first.
- (2) If these can't help too, please reinstall the driver for camera.